

# Huacana

## Huacana Oval Bathroom Sinks



THOMPSON

### FEATURES

- Handcrafted, Oval hand hammered design with unique artisan detailing that adds texture and character to any space
- Rigorously tested to ensure no puddling or leaking
- Coordinating drain available, sold separately designed to match the sink's finish for a seamless look
- Easy to clean and maintain
- Limited Lifetime Warranty crafted for quality and backed for life



### DIMENSIONS

#### Outer Dimensions

- Length: 19"
- Width: 14"
- Depth: 5"

#### Inner Dimensions / Bowl Area

- Length: 17"
- Width: 11 3/4"
- Depth: 5"
- Drain 1 1/2"

### Mounting Options

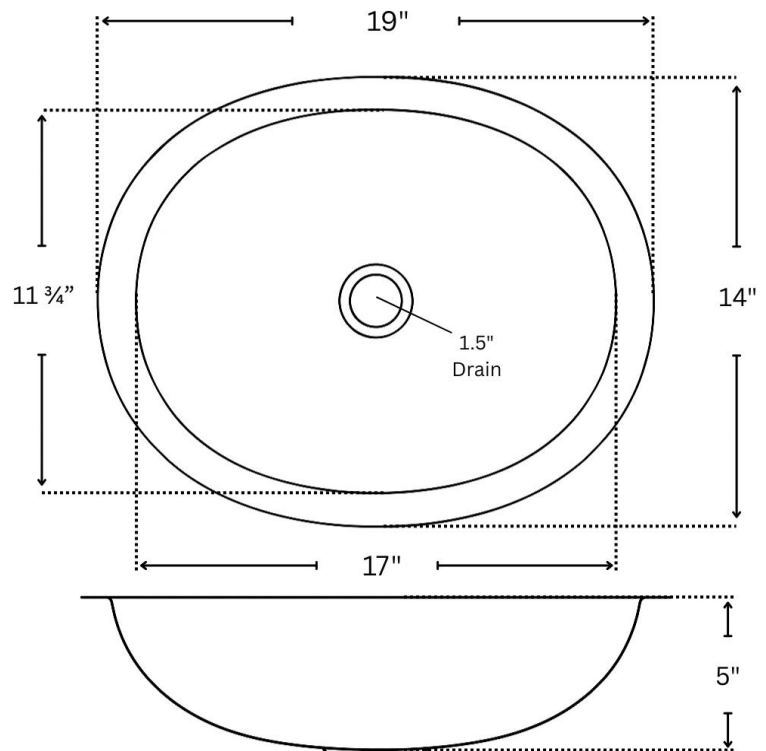
- Drop-In
- Undermount

### Overflow

- No overflow

### Minimum Base Cabinet Width

- At least 2" wider than the sink (21")



Contact us at [customerservice@thompsontraders.com](mailto:customerservice@thompsontraders.com) or (336) 272-3003.

Thompson reserves the right to make revisions without notice to product specifications.

For the most current Specification Sheet, go to [www.thompsontraders.com](http://www.thompsontraders.com)

# Huacana





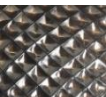

## Huacana Oval Bathroom Sinks



THOMPSON

### AVAILABLE MATERIALS/FINISHES

*Images intended for reference only:*

		SINK WEIGHT	SHIPPING WEIGHT
	Huacana Hammered Fired Copper Item Code: 2OP Finish Profile: Stainless Steel Base Material: Stainless Steel	n/a	n/a
	Huacana Smooth Matte Black Item Code: 2OMB Finish Profile: Sealed Base Material: Copper	3.85 lbs	9 lbs
	Huacana Hammered Nickel Item Code: 2OBC-BRN Finish Profile: Nickerled Base Material: Copper	n/a	n/a
	Huacana Black Nickel Item Code: 2OBC-BN Finish Profile: Sealed Base Material: Copper	4.2 lbs	10 lbs
	Huacana Diamond Quilt Black Nickel Item Code: 2OBN-DQ Finish Profile: Sealed Base Material: Copper	4.1 lbs	10 lbs
	Huacana Hammered Antique Satin Gold Item Code: 2OASG Finish Profile: Sealed Base Material: Brass	n/a	n/a

To learn more about our various finishes, as well as care and maintenance recommendations, please refer to our [Finish Guide](#).

Note: Due to the handcrafted nature of this product, it will vary in finish, texture, hammering, and other details. Dimensions may vary up to ¼" (6mm). We strongly recommend waiting for the actual product before making any installation cuts.

Contact us at [customerservice@thompsontraders.com](mailto:customerservice@thompsontraders.com) or (336) 272-3003.

Thompson reserves the right to make revisions without notice to product specifications.

For the most current Specification Sheet, go to [www.thompsontraders.com](http://www.thompsontraders.com)